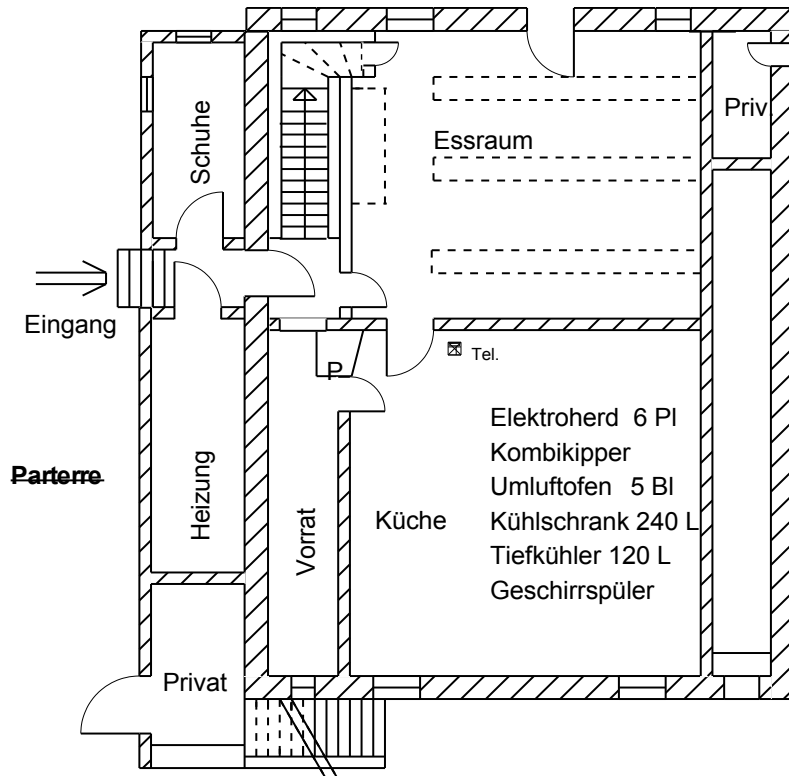


Gruppenferienhaus Bruder Klaus

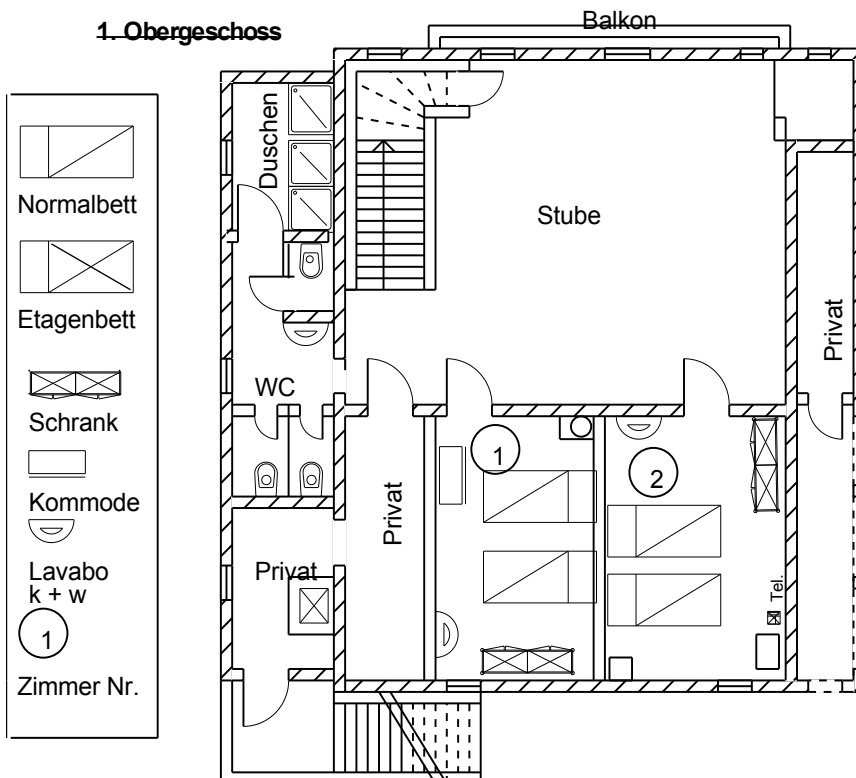
Grundrisspläne Haus 1

EG + 1. OG

Haus 1



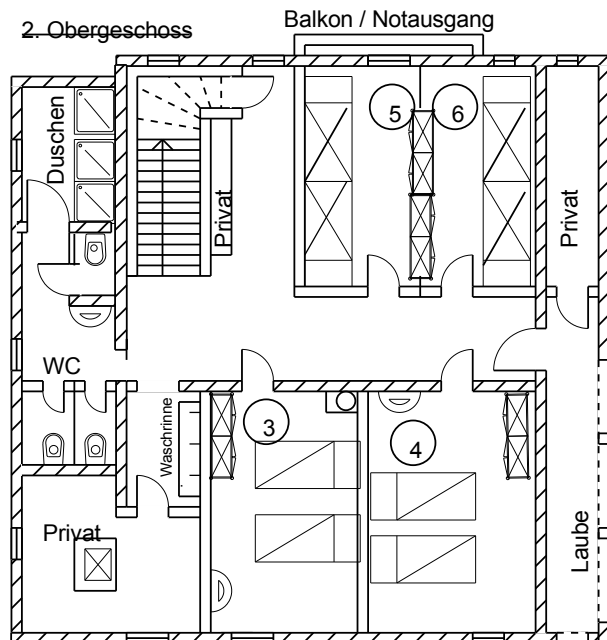
1. Obergeschoss



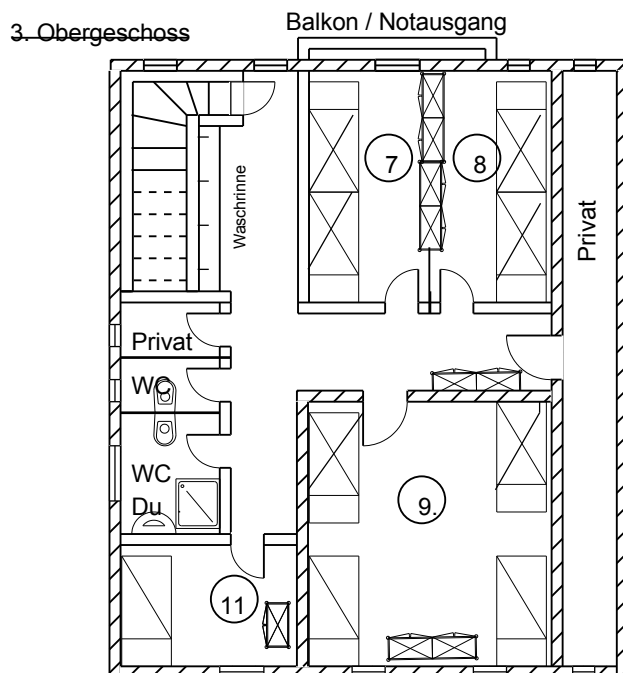
Gruppenferienhaus Bruder Klaus

Grundrissplan Haus 1

2. + 3. OG



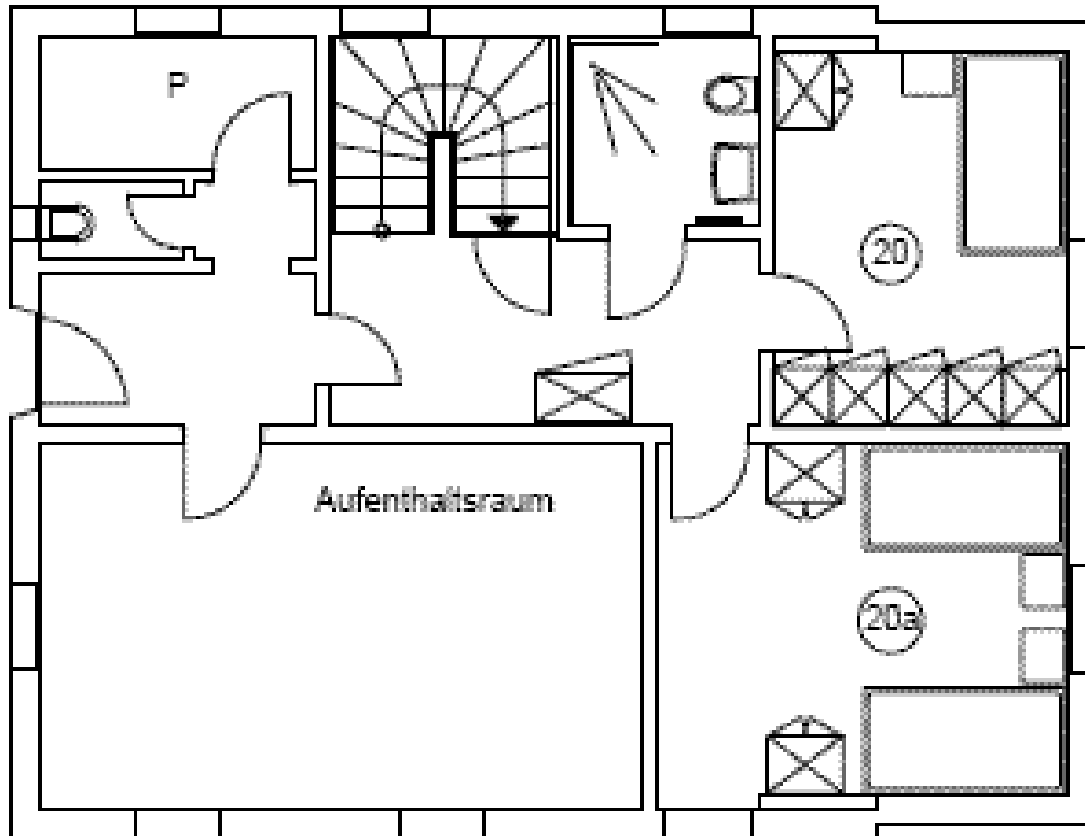
Übersicht Haus 1	
Zi Nr.	Betten
1	2
2	2
3	2
4	2
5	4
6	4
7	4
8	4
9	6
11	1
Total 31	



Gruppenferienhaus Bruder Klaus

Grundrisspläne Haus 2

EG

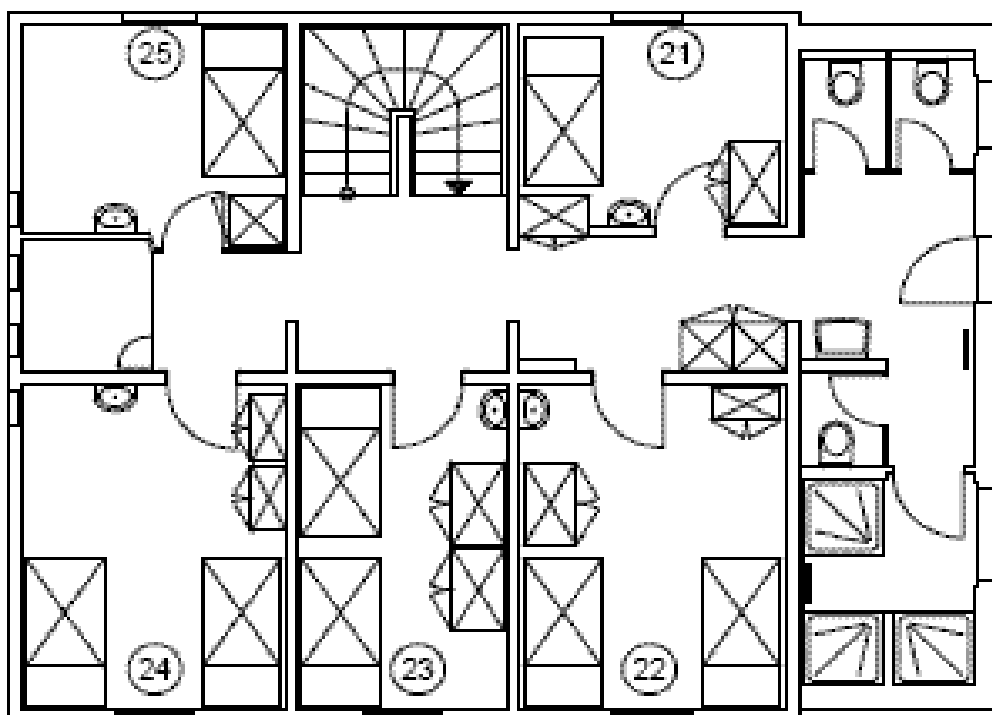


Grundriss EG

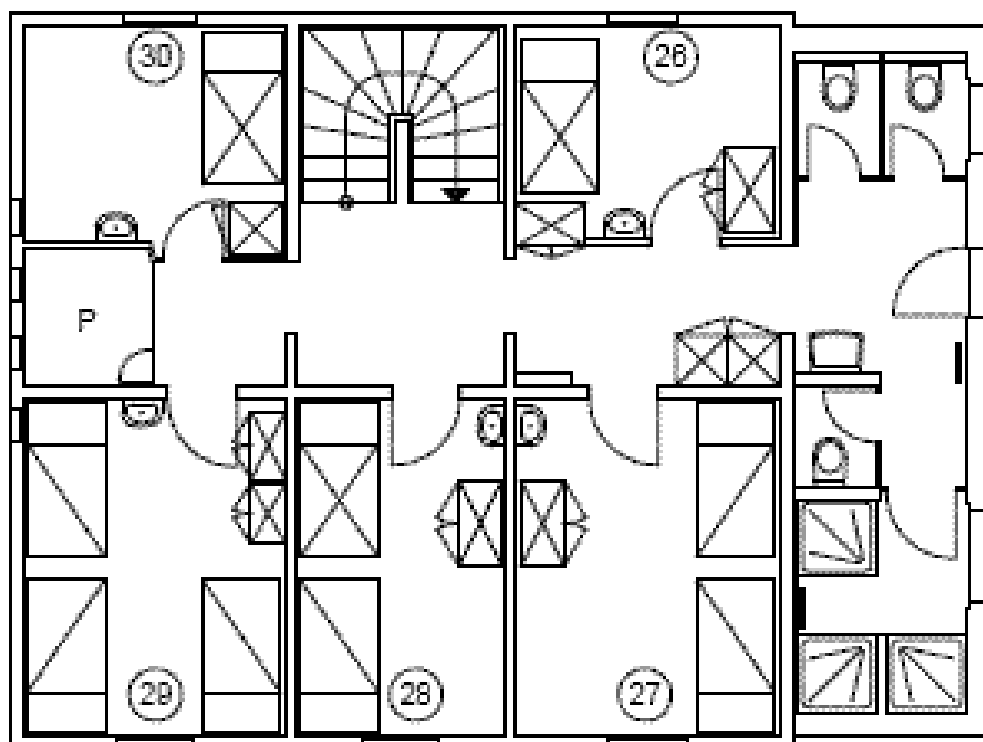
Zimmer Nr.	Anzahl Betten
20	1
20a	2
21	2
22	4
23	3
24	4
25	2
26	2
27	2
28	3
29	3
30	2
Total	30

Zimmer 20, 20a und Dusche/WC sind rollstuhlgängig

Gruppenferienhaus Jugendheim Bruder Klaus Grundrisspläne Haus 2 1. + 2. OG



Grundriss 1. OG



Grundriss 2. OG